



## Why invest in ENDPOINT INSIGHTS ?

- Remotely know what computers, monitors, and docking stations are in your current inventory, instantly and automatically
- Minimize risk by seeing device age to make smarter decisions on what to replace
- Effortlessly support break-fix incidents by leveraging existing device warranties
- Upgrade, patch, or remove user-installed software to keep your environment secure.
- Reduce vulnerabilities and ensure compliance with company standards



## Powerful Insights are Within Reach.

### TOTAL ENVIRONMENT KNOWLEDGE

Effortlessly gather, organize, consolidate, and normalize your critical endpoint data - all through your Microsoft ConfigMgr console and other popular ITSMs.

### ACCESS TO INSIGHTS

Stay informed about your hardware & software inventory and infrastructure details. View hundreds of datapoints that can make all the difference to your environment and end users.

### BETTER INFORMED DECISIONS

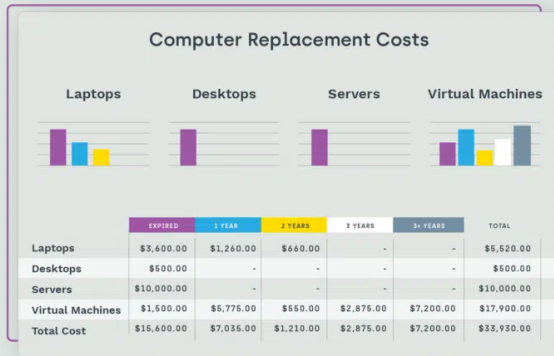
Access a complete picture of your devices, software installed, existing warranties, and more so you can improve your IT operations and heighten environmental security - ultimately reducing costs.

“

We know what assets need to be replaced and can plan accordingly when it comes to budget time, so there are no surprises. It is a great tool to add to the toolbox.

”

**-System Admin**

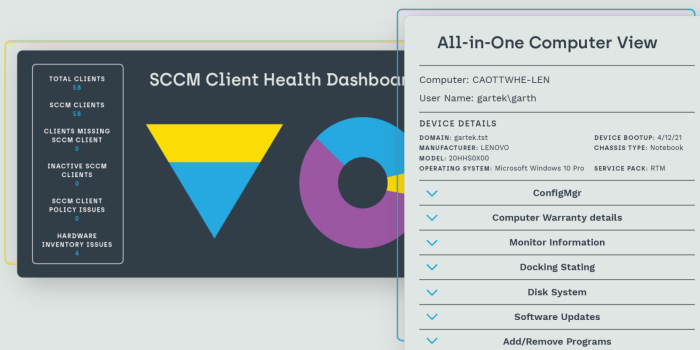
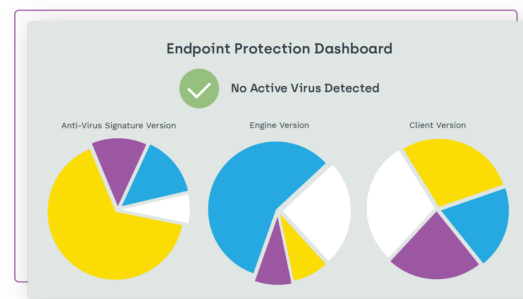


## Budget with confidence

Stay up to date with an accurate picture of your environment inventory to reduce financial and security risks. Instantly and automatically know what computers, monitors, and docking stations are in your inventory so you can proactively plan for the future.

## See all software & close security loopholes

ConfigMgr blindspots can leave your system vulnerable to potential risks. Automatically discover what software is installed - including user-installed - so you can eliminate, upgrade, or patch any potential problems.



## Eliminate disrupted users

Smooth and seamless infrastructure upgrades require understanding what's in your environment and who uses it. Get complete asset intelligence instantly, providing visibility to give you a path to smarter planning.

## Stay up and running

Downtime is often caused by a lack of visibility in your environment - and can be costly. Get ahead of issues with complete asset intelligence. Know what monitor, printer, and other devices end users have, what software is installed, and more.

